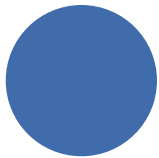




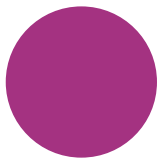
EN Colour guide system by basic use | Coat type characteristics with examples for breeds



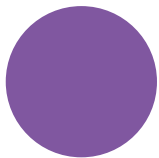
**Top Coat &  
Base Coat**



**Massage &  
Shine**



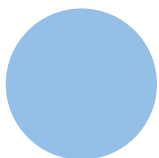
**Comb &  
Style**



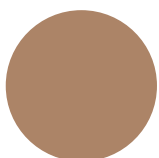
**Detangle &  
Thin**



**Shear &  
Shape**



**Discover any  
Parasites**



**Claw Care**



**Curly hair**

**Characteristics**

soft, curly, is sheared regularly

**Examples for breeds**

Poodle



**Long hair/Silky hair**

**Characteristics**

medium-long up to long, silky or thick top hair either with fine or with soft, thick base coat

**Examples for breeds**

**Dog:** Collie/Golden Retriever/Bernese Mountain Dog/ Yorkshire Terrier/Longhair Dachshound/Spaniel/Maltese Dog

**Cat:** Maine Coon Cat/Persian Cat



**Shaggy hair**

**Characteristics**

top hair and base coat long, lush and shaggy

**Examples for breeds**

Bobtail/Briard/Tibetan Terrier/Bearded Collie



**Short hair/Smooth hair**

**Characteristics**

short to medium-long, smooth, shiny top hair and fine, soft, thick to very thick base coat/short, smooth, shiny top hair without base coat

**Examples for breeds**

**Dog:** Labrador/Rottweiler/Beagle/Pug/German Shepherd/ Husky/Weimaranian/Mastiff/Boxer/Rhodesian Ridgeback

**Cat:** European Short Hair/Chartreux/Siamese



**Wire hair**

**Characteristics**

hard, thick and wiry top hair with short, soft and thick base coat, has to be trimmed regularly

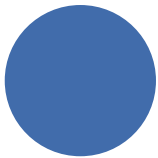
**Examples for breeds**

Wire-haired Dachshound/Airdale Terrier/Cairn Terrier/Fox Terrier/ Schnauzer





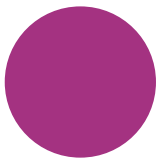
**(FR) Guide couleur pour utilisation de base | Caractéristiques du type de pelage avec exemples de races**



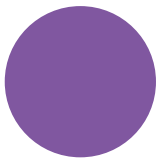
**Pelage extérieur &  
Base du pelage**



**Masse &  
Fait briller**



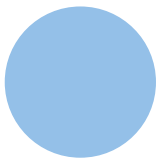
**Peigne &  
Style**



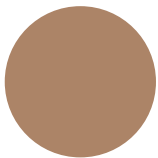
**Démêle &  
Eclaircit**



**Tond &  
Modèle**



**Détection de chaque  
parasite**



**Soins des griffes**



**Poils frisés**

**Caractéristiques**

Doux, frisés, tondus régulièrement

**Exemples de races**

Caniche



**Poils longs/Poils soyeux**

**Caractéristiques**

De moyennement longs à longs, soyeux ou épais sur le dessus avec sous-pelage fin ou doux et épais

**Exemples de races**

**Chien :** Colley/Golden Retriever/St. Bernard/Yorkshire Terrier/Setter/Teckel à poil long/Epagneul/Chien Maltese

**Chat :** Main Coon/Chat Persan



**Poils épais**

**Caractéristiques**

Poils longs, épais et fournis

**Exemples de races**

Bobtail/Briard/Terrier Tibétain/Bearded Collie



**Poils courts/Poils doux**

**Caractéristiques**

Poils courts à moyennement longs, doux, et brillants, et sous-pelage doux, épais à très épais/Poils courts, doux et brillants sans sous-pelage

**Exemples de races**

**Chien :** Labrador Retriever/Rottweiler/Beagle/Carlin/Berger Allemand/Husky/Braque de Weimar/Boxer/Rhodesian Ridgeback

**Chat :** Chats Européens/Chartreux/Siamois



**Poils durs**

**Caractéristiques**

Poils durs, épais et fins sur le dessus avec sous-pelage court, doux et épais, doivent être coupés régulièrement

**Exemples de races**

Teckel à poil court/Airedale Terrier/Cairn Terrier/Fox Terrier/Schnauzer





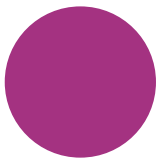
## ES Guía de colores y uso esencial | Características del tipo de pelaje con ejemplos de razas



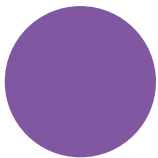
**Manto y Subpelo**



**Masaje y Brillo**



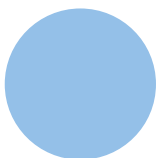
**Cepillado y Arreglos**



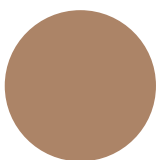
**Desenredar y Aligerar**



**Esquilar y Dar forma**



**Encuentra cualquier parásito**



**Cuidado de uñas**



### Pelo rizado

#### **Características**

Blando y rizado; se debe cortar periódicamente

#### **Ejemplos de razas**

Caniche



### Pelo largo, sedoso

#### **Características**

De longitud media-larga a larga; manto sedoso o grueso; tanto con subpelo fino, como con subpelo blando o grueso

#### **Ejemplos de razas**

**Perro:** Collie/Retriever/Bouvier Bernois/Yorkshire Terrier/Teckel de Pêlo Longo/Spaniel/Maltês

**Gato:** Main Coon/Persa



### Pelo lanudo

#### **Características**

Manto y subpelo largo, abundante y lanudo

#### **Ejemplos de razas**

Bobtail/Pastor de Brie/Terrier Tibetano/Bearded Collie



### Pelo corto/Pelo suave

#### **Características**

De longitud corta a medio-corta; manto suave y brillante; y subpelo fino, blando y de grueso a muy grueso/Manto corto, suave y brillante; sin subpelo

#### **Ejemplos de razas**

**Perro:** Labrador Retriever/Rottweiler/Beagle/Carlino/Pastor alemán/Husky/Weimaraner/Boxer/Rhodesian Ridgeback

**Gato:** Europeo de Pelo Corto/Cartujo/Siamés



### Pelo duro

#### **Características**

Manto duro, grueso y áspero; con subpelo corto, blando y grueso; se debe tratar periódicamente

#### **Ejemplos de razas**

Teckel de pelo duro/Terrier de Airedale/Cairn Terrier/Fox Terrier/Schnauzer

