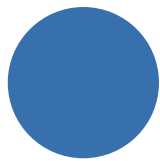




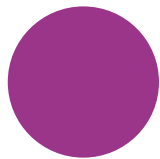
EN Color guide system by use | Coat type characteristics with examples for breeds



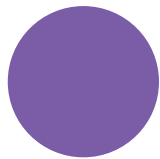
**Top Coat &
Base Coat**



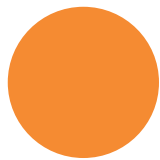
**Massage &
Shine**



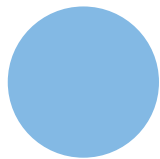
**Comb &
Style**



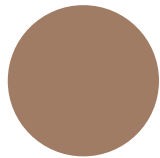
**Detangle &
Thin**



**Shear &
Shape**



**Discover any
Parasites**



Claw Care



Curly hair

Characteristics
soft, curly, is sheared regularly

Examples for breeds
Poodle



Long hair/Silky hair

Characteristics
medium-long up to long, silky or thick top hair either with fine or with soft, thick base coat

Examples for breeds
Dog: Collie/Golden Retriever/Bernese Mountain Dog/
Yorkshire Terrier/Longhair Dachshound/Spaniel/Maltese Dog

Cat: Maine Coon Cat/Persian Cat



Shaggy hair

Characteristics
top hair and base coat long, lush and shaggy

Examples for breeds
Bobtail/Briard/Tibetan Terrier/Bearded Collie



Short hair/Smooth hair

Characteristics
short to medium-long, smooth, shiny top hair and fine, soft, thick to very thick base coat/short, smooth, shiny top hair without base coat

Examples for breeds
Dog: Labrador/Rottweiler/Beagle/Pug/German Shepherd/
Husky/Weimaranian/Mastiff/Boxer/Rhodesian Ridgeback

Cat: European Short Hair/Chartreux/Siamese



Wire hair

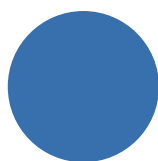
Characteristics
hard, thick and wiry top hair with short, soft and thick base coat, has to be trimmed regularly

Examples for breeds
Wire-haired Dachshound/Airdale Terrier/Cairn Terrier/Fox Terrier/
Schnauzer





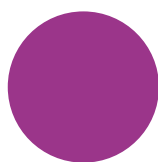
(FR) Guide couleur pour utilisation de base | Caractéristiques du type de pelage avec exemples de races



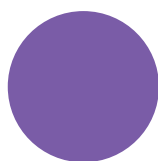
Pelage extérieur & Base du pelage



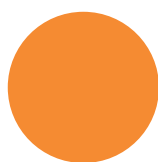
Masse & Fait briller



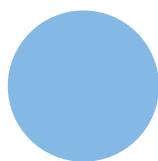
Peigne & Style



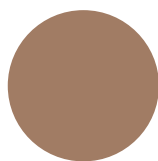
Démêle & Eclaircit



Tond & Modèle



Détekte chaque parasite



Soin des griffes



Poils frisés

Caractéristiques

Doux, frisés, tondus régulièrement

Exemples de races

Caniche



Poils longs/Poils soyeux

Caractéristiques

De moyennement longs à longs, soyeux ou épais sur le dessus avec sous-pelage fin ou doux et épais

Exemples de races

Chien : Colley/Golden Retriever/St. Bernard/Yorkshire Terrier/Setter/Teckel à poil long/Epagneul/Chien Maltese

Chat : Main Coon/Chat Persan



Poils épais

Caractéristiques

Poils longs, épais et fournis

Exemples de races

Bobtail/Briard/Terrier Tibétain/Bearded Collie



Poils courts/Poils doux

Caractéristiques

Poils courts à moyennement longs, doux, et brillants, et sous-pelage doux, épais à très épais/Poils courts, doux et brillants sans sous-pelage

Exemples de races

Chien : Labrador Retriever/Rottweiler/Beagle/Carlin/Berger Allemand/Husky/Braque de Weimar/Boxer/Rhodesian Ridgeback

Chat : Chats Européens/Chartreux/Siamois



Poils durs

Caractéristiques

Poils durs, épais et fins sur le dessus avec sous-pelage court, doux et épais, doivent être coupés régulièrement

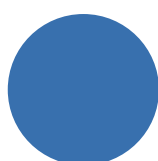
Exemples de races

Teckel à poil court/Airedale Terrier/Cairn Terrier/Fox Terrier/Schnauzer

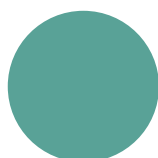




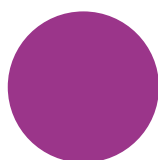
ES Guía de colores y uso esencial | Características del tipo de pelaje con ejemplos de razas



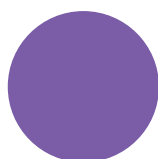
Manto y Subpelo



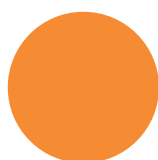
Masaje y Brillo



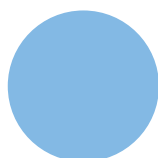
Cepillado y Arreglos



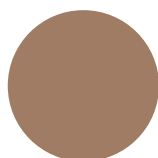
Desenredar y Aligerar



Esquilar y Dar forma



Encuentra cualquier parásito



Cuidado de uñas



Pelo rizado

Características

Blando y rizado; se debe cortar periódicamente

Ejemplos de razas

Caniche



Pelo largo, sedoso

Características

De longitud media-larga a larga; manto sedoso o grueso; tanto con subpelo fino, como con subpelo blando o grueso

Ejemplos de razas

Perro: Collie/Retriever/Bouvier Bernois/Yorkshire Terrier/Teckel de Pêlo Longo/Spaniel/Maltês

Gato: Main Coon/Persa



Pelo lanudo

Características

Manto y subpelo largo, abundante y lanudo

Ejemplos de razas

Bobtail/Pastor de Brie/Terrier Tibetano/Bearded Collie



Pelo corto/Pelo suave

Características

De longitud corta a medio-corta; manto suave y brillante; y subpelo fino, blando y de grueso a muy grueso/Manto corto, suave y brillante; sin subpelo

Ejemplos de razas

Perro: Labrador Retriever/Rottweiler/Beagle/Carlino/Pastor alemán/Husky/Weimaraner/Boxer/Rhodesian Ridgeback

Gato: Europeo de Pelo Corto/Cartujo/Siamés



Pelo duro

Características

Manto duro, grueso y áspero; con subpelo corto, blando y grueso; se debe tratar periódicamente

Ejemplos de razas

Teckel de pelo duro/Terrier de Airedale/Cairn Terrier/Fox Terrier/Schnauzer

